



Air Bag Sleever

Model 77SASL - Steam

Model 77EASL - Electric

- Steam and Air Bag Shirt Sleeve Finisher
- Steam and Electric Models Available
- No Compressed Air Required
- Finishes Small to Large Size Sleeves
- Two Sleeve Forms with Cuff Clamps
- Shoulder Yoke Tensioner to hold Shirt in Position while Finishing
- Steam-Heated Air through Porous Air Bags
- Operational Cycle - Steam Only, Steam and Air, Air Only or any Combination
- Convenient Controls with Adjustable Steam and Air Timer
- For Use With Bantam or Cabinet Shirt Systems

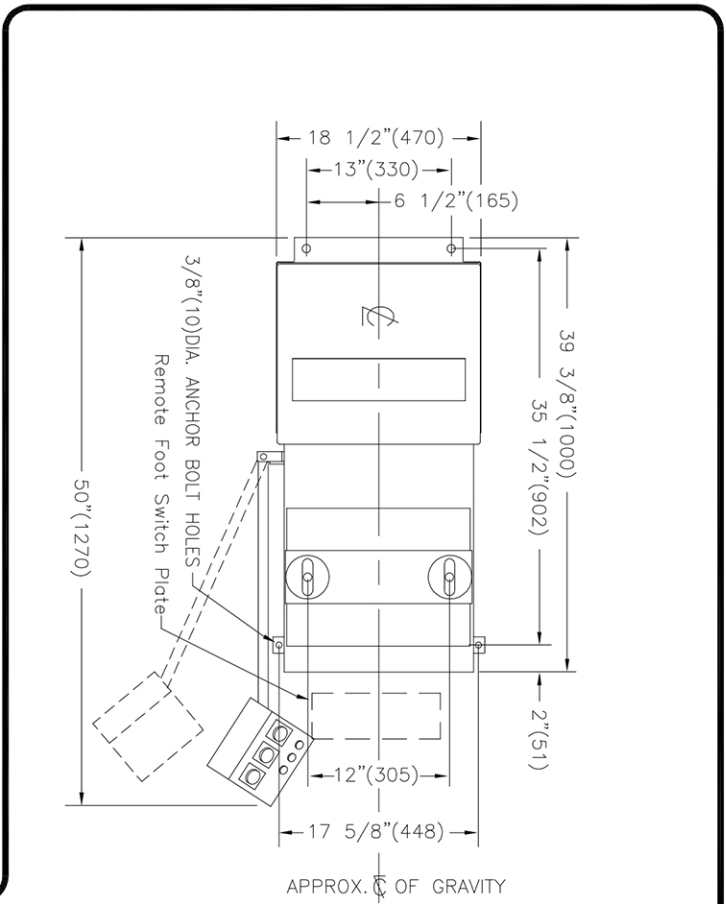


The Air Bag Sleever can be a great economical solution to traditional cabinet sleeveers. Also, it provides a no-crease finishing solution for small cleaners using traditional laundry presses for shirt pressing.

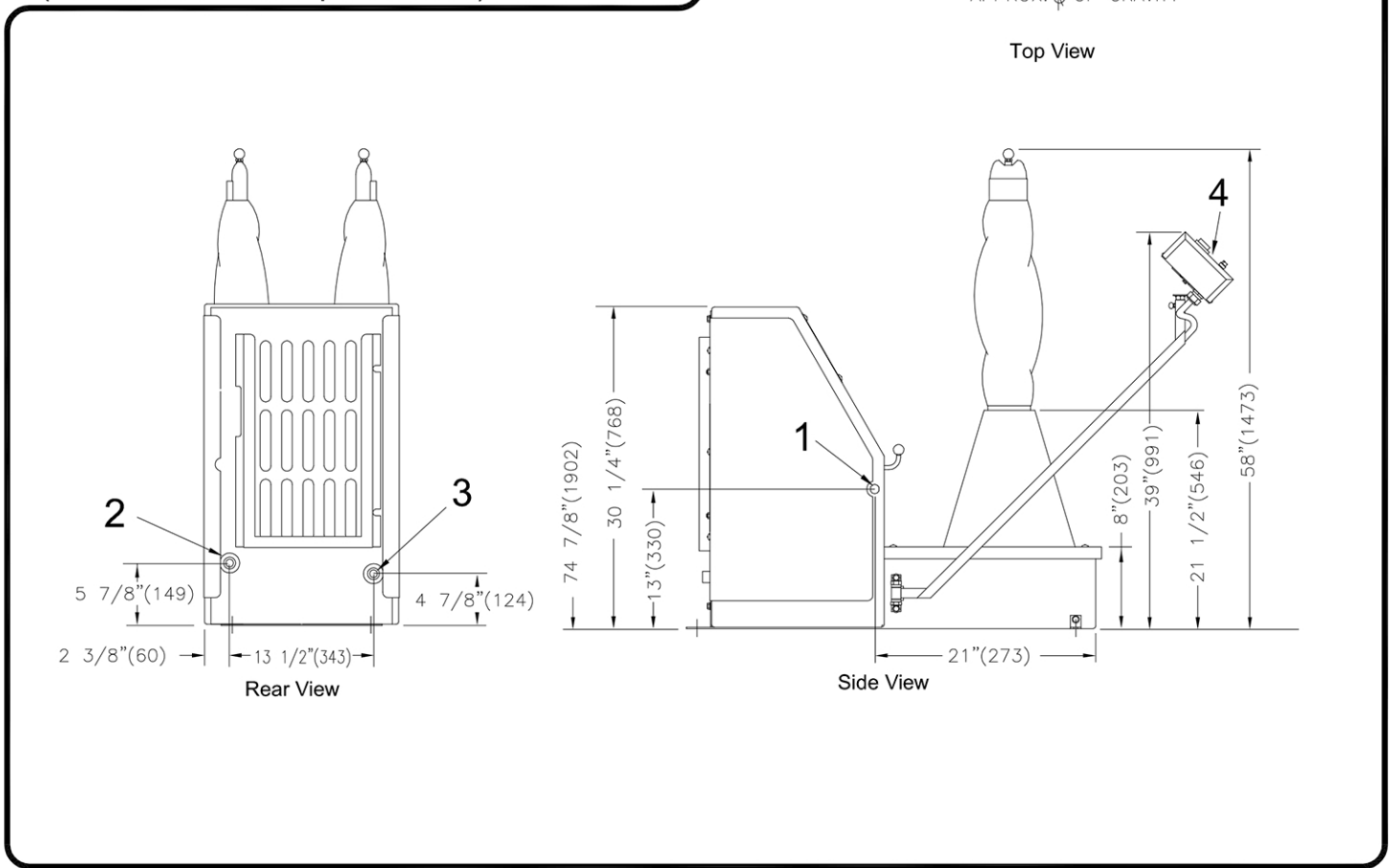
Specifications

Models 77SASL & 77EASL

| Electrical connections | | 77SASL | 77EASL |
|--------------------------|---|--------------|-----------------------|
| Voltage | 120V 1PH 50/60Hz 9amps | Standard | — |
| Voltage | 230V 1PH 50/60Hz 4.5amps | optional | — |
| Voltage | 230/115V 1PH 50/60Hz 32amps with neutral wire | — | Standard |
| Steam and Air connection | | | |
| Steam Inlet | NPT | 1/2" | — |
| Steam Outlet | NPT | 1/2" | — |
| Rec. steam pressure | PSIG kPa | 100 689 | — — |
| Steam consumption | BHP kg/hr | 2 31.2 | — — |
| Weight (crated) | | | |
| Shipping | lbs kg | 350 159 | 350 159 |
| Model 77SASL | | Model 77EASL | |
| 1 | Electrical cord | 1 | NA |
| 2 | Steam connection | 2 | Electrical connection |
| 3 | Steam Outlet connection | 3 | NA |
| 4 | Control Panel | 4 | NA |



Top View



Rear View

Side View