



Collar-Cuff-Yoke Press

Model 392SCS/SCSY



392SCS

- Two-hand control
- Nickel-plated heads reduce heat loss, saves energy
- Dual-cylinder design provides maximum pressing force
- 392SCS Designed to press cuffs and collar in one lay
- 392SCSY Designed to press cuffs, collar and yoke in one lay

www.forentausa.com

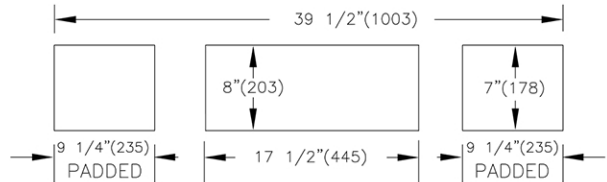
Tel: 423-586-5370 • Email: info@forentausa.com

Made in USA

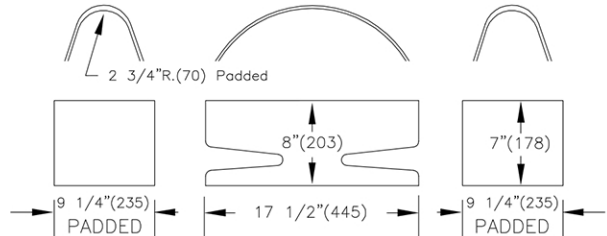
Specifications

Models 392SCS/SCSY

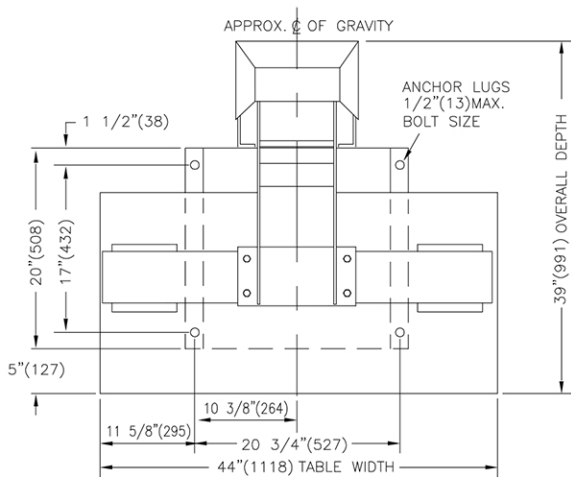
Electrical connections		392SCS 392SCSY
Voltage	120V 1PH 50/60Hz .5amps	Standard optional
Voltage	230V 1PH 50/60Hz .25amps	
Steam and Air connection		
Steam Inlet	NPT	1/2"
Steam Outlet	NPT	1/2"
Rec. steam pressure	PSIG kPa	110-125 758-861
Steam consumption	BHP kg/hr lb/hr	1 15.6 34.5
Compressed air	NPT	3/8"
Air consumption	free air/cycle free air/cycle	0.8 CU.FT. 27 liters
Rec. air pressure	PSIG kPa	60 414
Water connection	NPT	1/4"
Weight (crated)		
Shipping	lbs kg	708 321
1 Control Push Buttons	4 Steam Outlet connection	
2 Steam connection	5 Electrical Connection	
3 Air connection	6 Water Connection (for water spray only)	



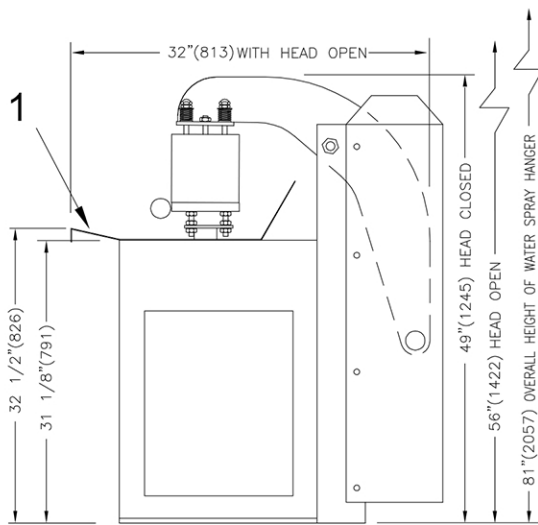
392SCS Buck Dimensions



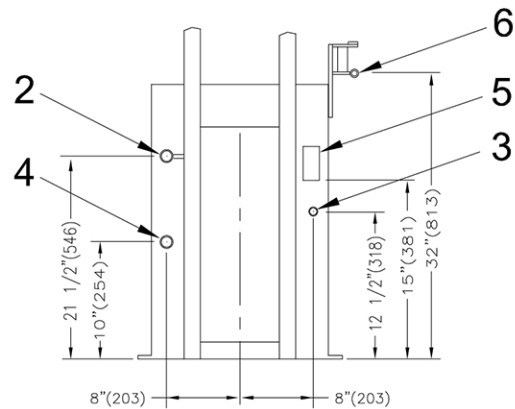
392SCSY Buck Dimensions



Top View



Right Side View



Partial Rear View

Detail Line Drawing (millimeters shown in parentheses)