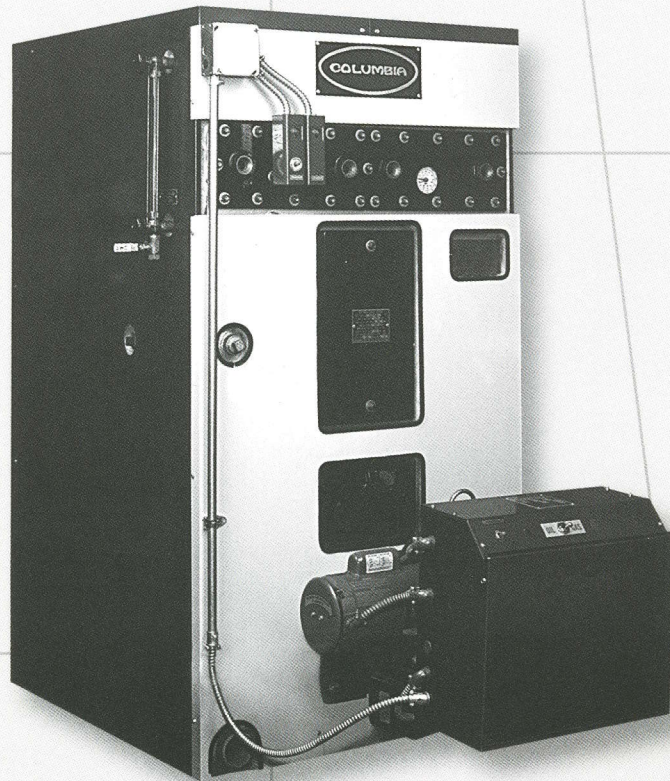


COLUMBIA

CWH SERIES

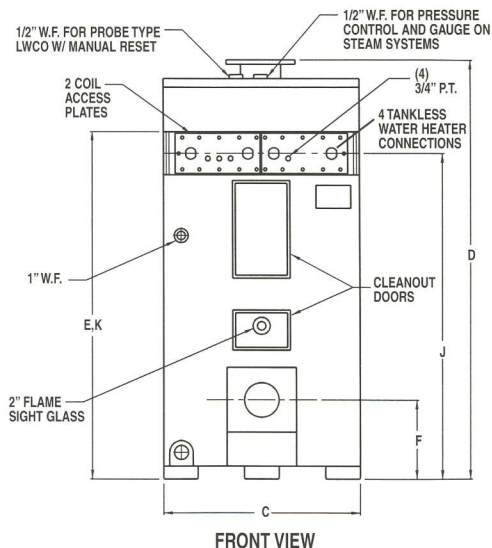
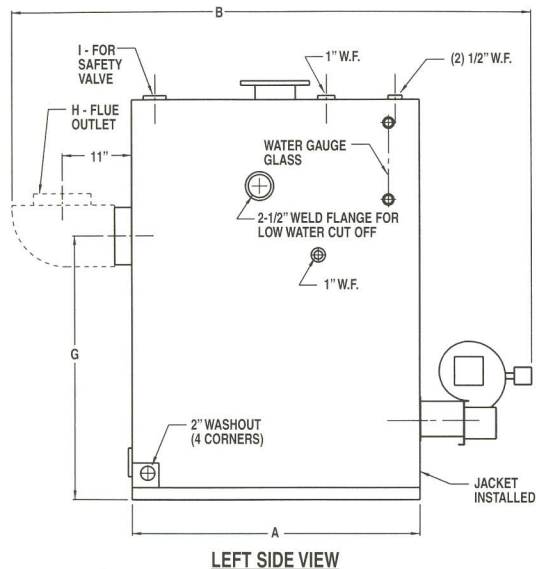
TANKLESS INDIRECT WATER HEATERS

Gas or Oil Fired • Continuous Draw Outputs
from 170 to 2460 gallons of water per hour,
at 100°F rise.



You can do BETTER with Columbia
GOOD people. BETTER Boilers. BEST value.

SPECIFICATIONS AND DATA



MODEL NO.	CWH 170	CWH 240	CWH 300	CWH 390	CWH 475	CWH 610	CWH 780	CWH 1200	CWH 1510	CWH 1810	CWH 2460
RATINGS											
Input --Gals. per hour	1.40	2.00	2.40	3.00	4.00	5.00	6.00	9.00	12.00	14.00	18.00
Input -- MBTU per Hr.	196	280	336	420	560	700	840	1260	1680	1960	2520
Gross Output	157	224	269	336	448	560	680	1014	1357	1568	2054
Horsepower	4	6	8	10	13	16	20	30	40	47	60
Continuous Draw Outputs											
Gals. per minute 80°F Rise*	3.50	5.00	6.25	8.20	9.9	12.6	16	25	31	38	51
Gals. per minute 100°F Rise**	2.80	4.00	5.00	6.50	7.9	10.1	13	20	25	30	41
Gals. per Hr.*	210	300	375	490	595	750	975	1500	1890	2280	3060
Gals. per Hr.**	170	240	300	390	475	610	780	1200	1510	1810	2460
HEATER DIMENSIONS											
A Base Length	22"	25"	27"	31"	31"	35"	39"	43"	51"	55"	63"
B Length w/Smoke Hood & Burner ⁽¹⁾	33"	36"	38"	45"	45"	68"	73"	76"	84"	95"	104"
C Boiler Width	19"	19"	26"	26"	30"	30"	32"	34"	34"	34"	40"
D Height Overall	45"	49"	53"	57"	57"	60"	64"	68"	74"	74"	75"
E Min. Safe Water Level	38"	43"	48"	51"	48"	49"	49"	49"	55"	55"	55"
F Burner Opening to Floor	8"	8"	9"	9"	11"	10"	12"	12"	14"	14"	14"
G Flue Outlet to Floor	32"	37"	40"	44"	42"	43"	42"	41"	47"	47"	47"
H Flue Outlet ^(2 & 3 - see note)	8 ⁽³⁾	8 ⁽³⁾	9 ⁽³⁾	9 ⁽³⁾	10 ⁽³⁾	10 ⁽³⁾	10 ⁽²⁾	10 ⁽²⁾	12 ⁽²⁾	12 ⁽²⁾	12 ⁽²⁾
I Safety Valve Opening	3/4"	3/4"	3/4"	1"	1-1/4"	1-1/4"	1-1/4"	1-1/4"	1-1/2"	1-1/2"	2"
J Coil Connections to Floor	39"	43"	47"	51"	50"	51"	51"	51"	57"	57"	57"
K Recommended Operating Water Level	41"	45"	49"	52"	52"	55"	57"	57"	63"	63"	63"
MISCELLANEOUS DIMENSIONS											
Approximate Shipping Weight	650	770	1080	1260	1500	1900	2100	2450	2800	3000	3850
Water Capacity -- Gals.	24	31	43	55	80	90	133	154	193	214	287
Tankless Water Heater Size No.	N6	#3	N1	N7	N1	N1	N2	N3	N4	N4	N5
Tankless Water Heater Connections	1"	1"	1"	1"	1"	1"	1"	1"	1"	1"	1"
No. of Tankless Water Heaters	1	1	1	1	2	2	2	2	2	2	2
Header/Mixing Valve Size	1-1/4"	1-1/4"	1-1/4"	1-1/4"	1-1/4"	1-1/2"	1-1/2"	2"	2"	2"	2-1/2"

NOTES: (1) - Standard Oil Burner. (2) Stack need only be vented with CWH-780 through CWH-2460.
 (3) CWH-170 through CWH-610 - chimney required, not pressure fired.

* 80°F Rise -- 40°-120°F
 ** 100°F Rise - 40°-140°F



Manufactured in USA by
COLUMBIA BOILER COMPANY
 P.O. Box 1070, Pottstown, PA 19464
 (610) 323-2700 FAX (610) 323-7292

www.columbiaboiler.com cbcsales@columbiaboiler.com



CONSTRUCTED in accordance with Section IV,
 ASME Boiler & Pressure Vessel Code.

