

Since 1936

**COLUMBIA**

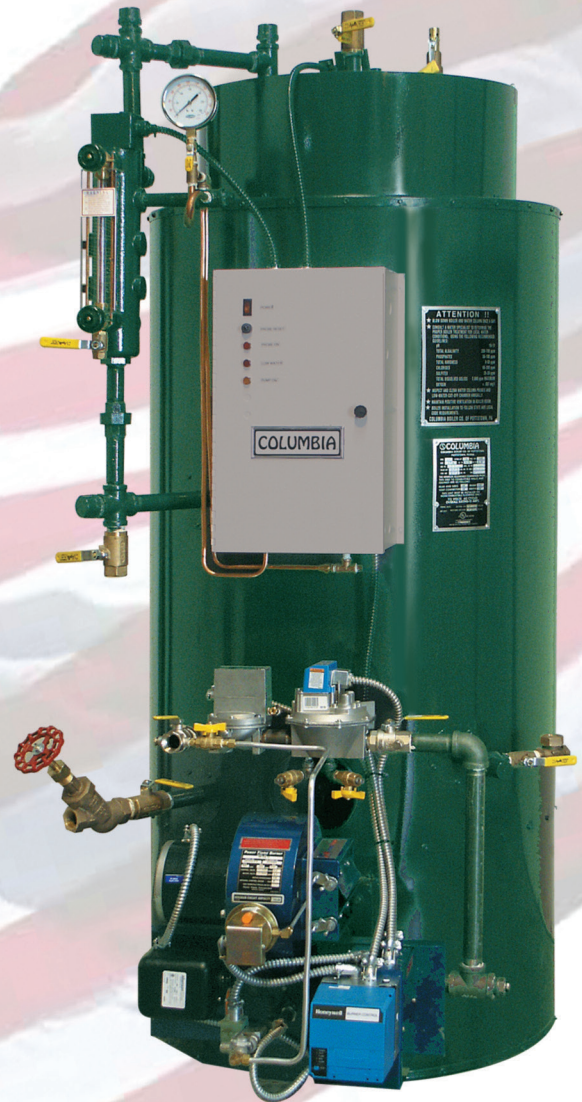
www.columbiaboiler.com

# COLUMBIA

## Boiler Company

### CT SERIES

- Vertical, Tubeless, 3 Pass Design
- 150 PSI Steam Boiler (15 and 250 psi also available)
- 10 to 60 HP
- 399 to 2520 MBTU/hr.
- Extra Large Steam Capacity
- Submerged Water Cooled Furnace (First in the Industry)
- High Efficiency Low-High-Low and Modulating Burners Available
- Low Emission Burners Available



*Since 1936*



Since 1936  
**COLUMBIA**

www.columbiaboiler.com

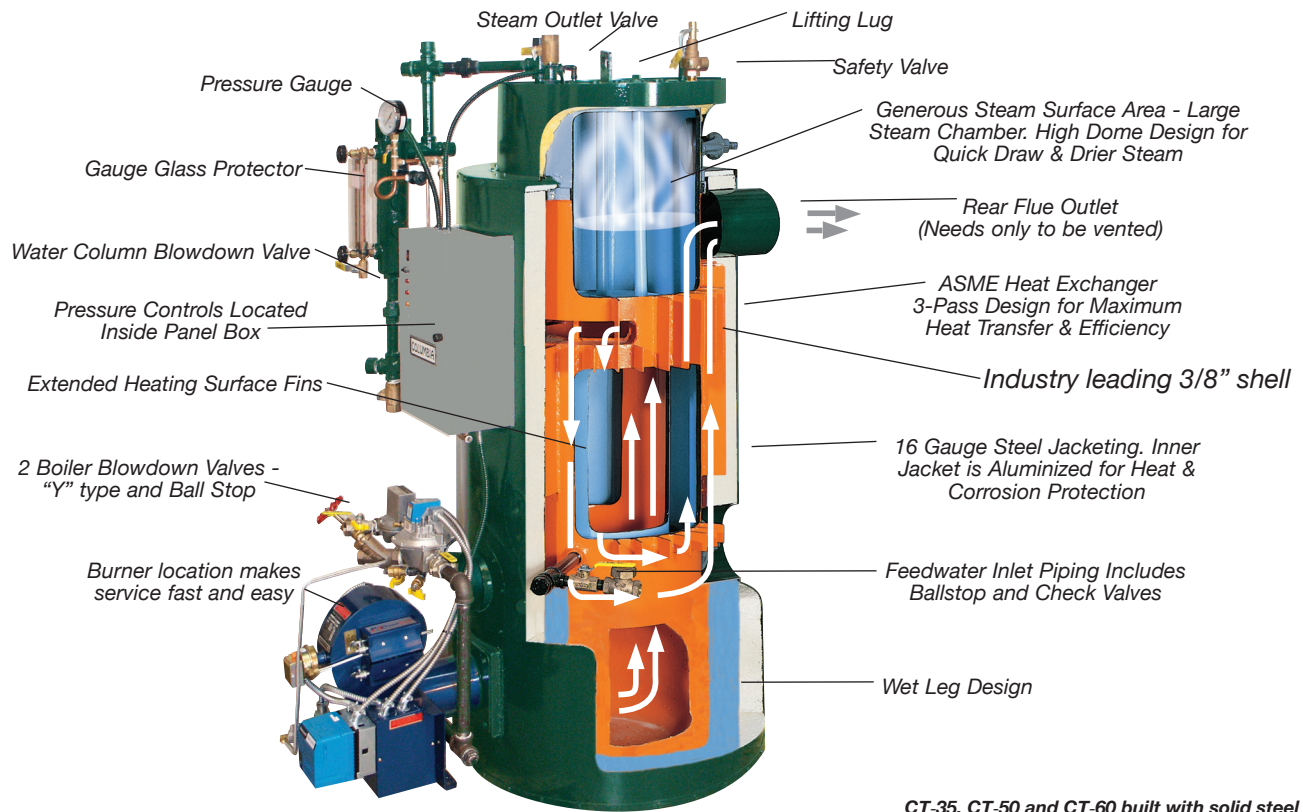
*You can do BETTER with Columbia*

**GOOD people. BETTER Boilers. BEST value.**

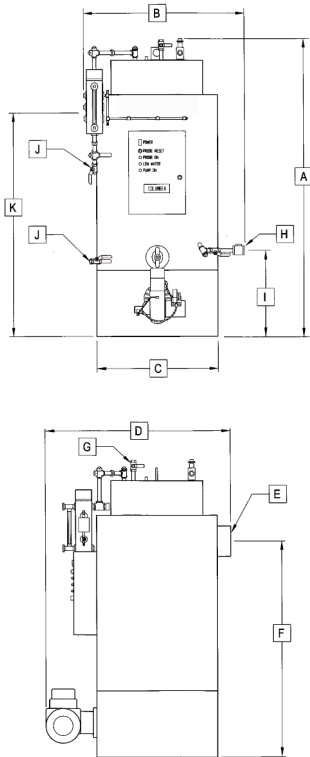


MADE IN THE USA

# COLUMBIA ADVANTAGES



CT-35, CT-50 and CT-60 built with solid steel skid base



## CT SPECIFICATIONS AND DATA

MODEL NO	CT-10	CT-15	CT-20	CT-25	CT-35*	CT-50*	CT-60*
<b>RATINGS:</b>							
Horsepower	9.5	15	20	25	35	50	60
Gas Input (BTU per hour)	399,000	630,000	840,000	1,050,000	1,470,000	2,100,000	2,520,000
Oil Input (Gals. per hour)	2.85	4.50	6.00	7.50	10.50	15.00	18.00
Output (BTU per hour)	320,000	504,000	672,000	840,000	1,176,000	1,680,000	2,016,000
Output (Lbs. steam per hour)	320	517	690	862	1207	1725	2070
Maximum Allowable Working Pressure	150	150	150	150	150	150	150
Water Capacity (Gals.)	52	70	86.5	110	90	240	414
Steam Release Surface Area	389 sq in	389 sq in	501 sq in	627 sq in	817 sq in	1402 sq in	1887 sq in
Hand Hole Sizes	(3)3x3-3/4	(3)3x3-3/4	(4)3x3-3/4	(4)3x3-3/4	(4)3x3-3/4	(4)3x3-3/4	(4)3x3-3/4
<b>BOILER DIMENSIONS:</b>							
A Boiler Height (includes piping)	72"	80"	82"	90"	96"	103"	103.75"
B Boiler Diameter (left to right, packaged including M & M)	34"	36"	39"	42"	43"	56"	63"
C Boiler Diameter (left to right, less trim & piping)	30"	34"	37"	40"	43"	56"	63"
D Burner to Flue Outlet (approx.)	56"	58"	59-1/2"	64"	71"	94"	96"
E Flue Outlet (diameter)	6"	8"	8"	10"	12"	12"	14"
F Flue Outlet to Floor (centerline)	48-1/4"	56-1/4"	57-1/4"	61-5/8"	69"	76-1/4"	77"
G Steam Outlet (IPS)*	1"	1"	1"	1-1/4"	1-1/4"	2"	3"
H Feedwater Inlet (IPS)	1/2"	1/2"	3/4"	3/4"	3/4"	1"	1"
I Feedwater Inlet to Floor (centerline)	6-1/2"	9-1/4"	11-1/4"	11-3/4"	13-1/2"	15-1/2"	16"
J Blowdown Outlet (IPS)	1"	1"	1"	1"	1"	1-1/4"	1-1/4"
K Normal Water Line to Floor	42"	59"	59-1/2"	67"	71-1/2"	81-1/2"	83-1/2"
Approx. Floor Space	3.25'x5.5'	3.25'x5.5'	3.25'x5.5'	4' x 6'	5' x 8'	6' x 10'	6' x 10'
<b>CRATED DIMENSIONS:</b>							
Left to Right	41-1/2"	41-1/2"	44"	44"	45-1/2"	56"	63"
Front to Rear	67"	67"	72"	72"	77"	96"	98"
Height	86"	86"	95"	95"	95"	104"	105"
Approx. Shipping Wt. (skidded & crated)	1900 lb	2500 lb	3150 lb	3450 lb	4650 lb	6200 lb	7000 lb

**CT BOILER/BURNER UNITS:** Completely assembled, piped, wired & factory tested with steam pressure gauge, water level gauge, gauge cocks with ball checks, gauge glass protector, steam safety valve, steam supply ball valve, boiler and water column blowdown valves, hand hole inspection plate assemblies, feedwater inlet ball valve & check valve, jacket and 3" poured refractory insulation, water column with probe type low water cut-off and pump control, additional probe type low water cut-off with manual reset, steam pressure control, steam hi-limit pressure control with manual reset, feed pump motor contactor, and UL listed burner with safety and operating controls. CSD-1 approval is standard on all boilers.

\*CT-35 skid base 45" x 48-1/2" \*CT-50 skid base 56" x 66" (WxL) \*CT-60 skid base 63" x 74" (WxL)

CT Boilers built for 15 psi steam have 3" outlet



MADE IN THE USA

Manufactured in USA by  
**COLUMBIA BOILER COMPANY**  
 P.O. Box 1070, Pottstown, PA 19464  
 (610) 323-2700 FAX (610) 323-7292  
 www.columbiaboiler.com  
 boilersales@columbiaboiler.com

